

**GENERAL ELECTRIC
 MODELS 17T10, 21T2**

GENERAL ELECTRIC 21T2

TRADE NAME	General Electric Models 17T10, 21T2
MANUFACTURER	General Electric Co., Electronics Dept., Electronics Park, Syracuse, New York
TYPE SET	Television Receiver
TUBES	Twenty-One

POWER SUPPLY 110-120 Volts AC - 60 Cycle **RATING** 1.7 Amp. @ 117 Volts AC
TUNING RANGE Channels 2 thru 13, Video IF 45.75MC Sound IF 41.25MC (Intercarrier)

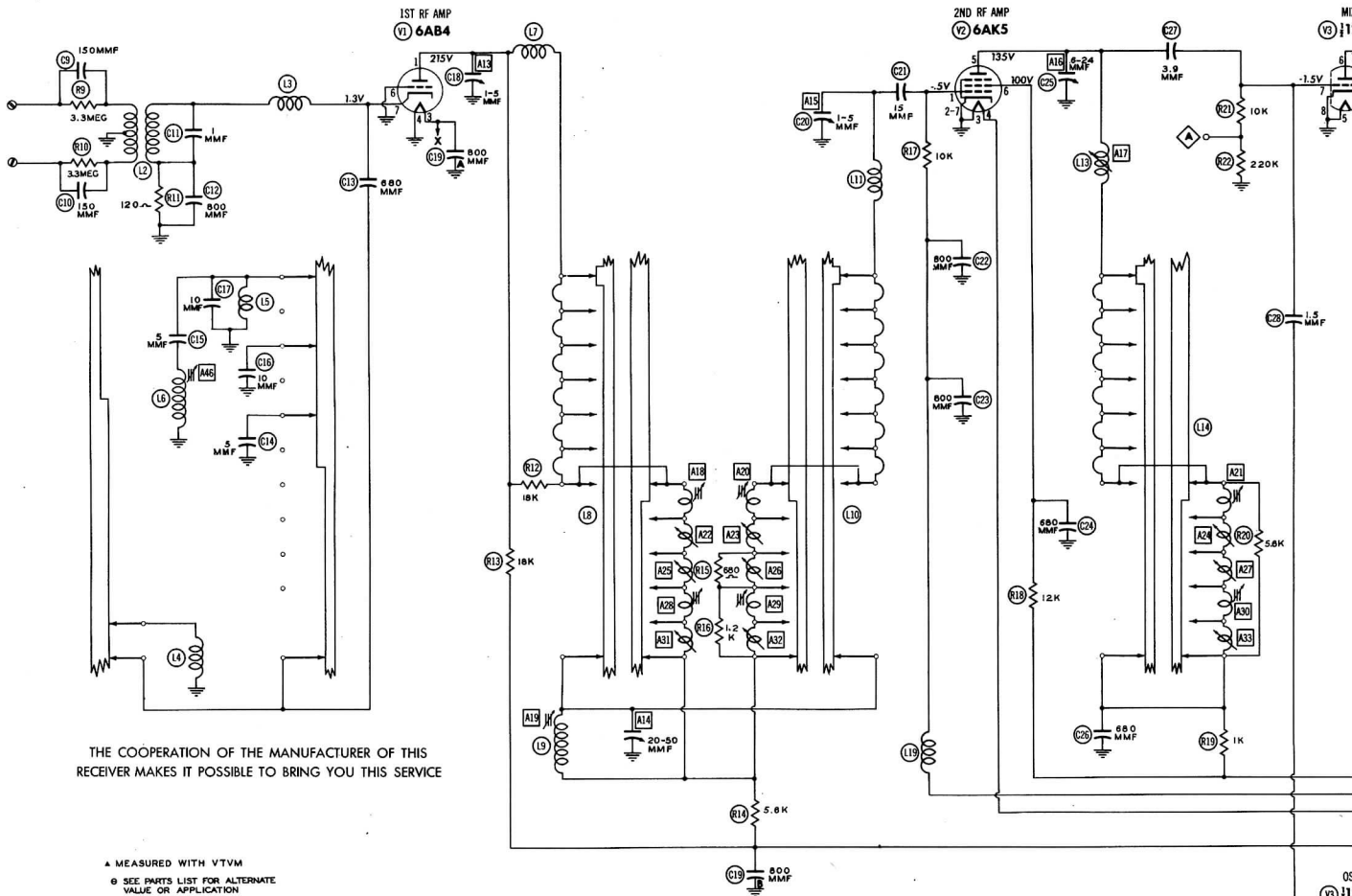
INDEX

Alignment Instructions	6,7	Photographs	
Disassembly Instructions	18	RF Tuner	10
Horizontal Sweep Circuit Adjustments	11	Resistor Identification	12, 17
Parts List and Descriptions	13 thru 16	Resistance Measurements	8
Photographs		Servicing in the Field	18
Cabinet - Rear View	11	Schematic	2
Capacitor Identification	4, 9	Tube Failure Check Chart	5
Chassis - Top View	3	Tube Placement Chart (Bottom View)	8
Inductor and Alignment Identification	19, 20	Tube Placement Chart (Top View)	5

HOWARD W. SAMS & CO., INC. • Indianapolis 5, Indiana

"The listing of any available replacement part herein does not constitute in any case a recommendation, warranty or guaranty by Howard W. Sams & Co., Inc., as to the quality and suitability of such replacement part. The numbers of these parts have been compiled from information furnished to Howard W. Sams & Co., Inc., by the manufacturers of the particular type of replacement part listed."
 "Reproduction or use, without express permission, of editorial or pictorial con-

tent, in any manner, is prohibited. No patent liability is assumed with respect to the use of the information contained herein. Copyright 1953 by Howard W. Sams & Co., Inc., Indianapolis 5, Indiana, U. S. of America. Copyright under International Copyright Union. All rights reserved under Inter-American Copyright Union (1910) by Howard W. Sams & Co., Inc." Printed in U. S. of America

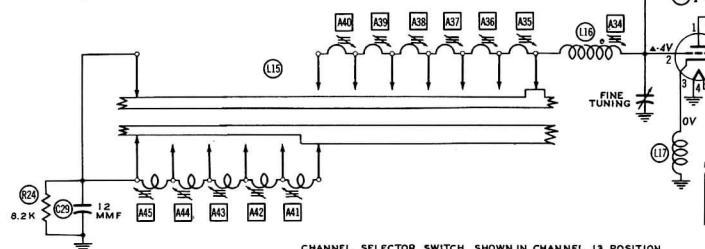


THE COOPERATION OF THE MANUFACTURER OF THIS RECEIVER MAKES IT POSSIBLE TO BRING YOU THIS SERVICE

- ▲ MEASURED WITH VTVM
- ⊖ SEE PARTS LIST FOR ALTERNATE VALUE OR APPLICATION
- ⋯ DOTTED IN PARTS ARE NOT USED IN ALL MODELS. WHEN DOTTED IN PARTS ARE USED POINTS MARKED X ARE BROKEN.

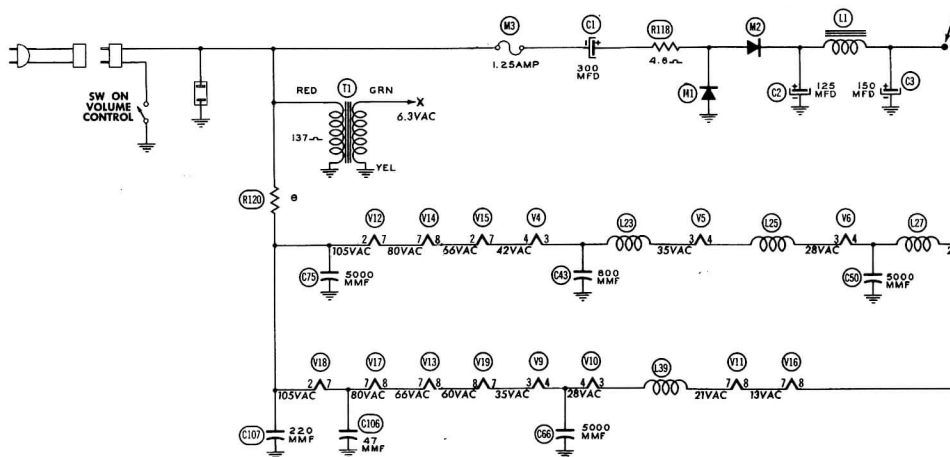
WAVE FORMS TAKEN WITH CONTROLS SET TO PRODUCE 50 VOLTS PEAK TO PEAK SIGNAL AT PICTURE TUBE

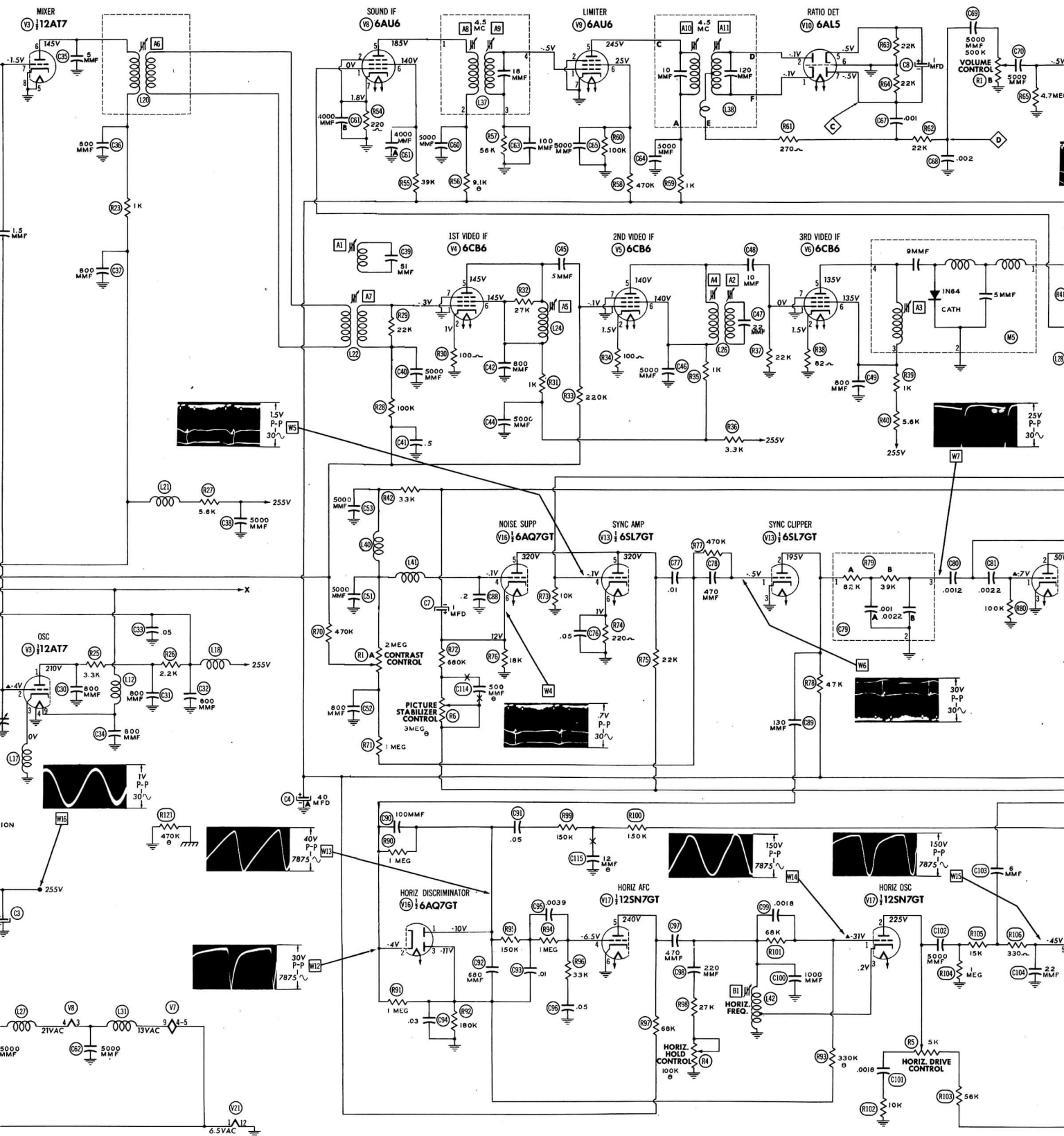
- | | |
|---|--|
| 1. DC voltage measurements are at 20,000 ohms per volt; AC voltage measured at 1,000 ohms per volt. | 3. Measured values are from socket pin to common negative unless otherwise stated. |
| 2. Pin numbers are quoted in a clockwise direction on bottom of socket. | 4. Line voltage maintained at 117 volts for voltage readings. |
| | 5. All controls set for normal operation; No signal applied. |

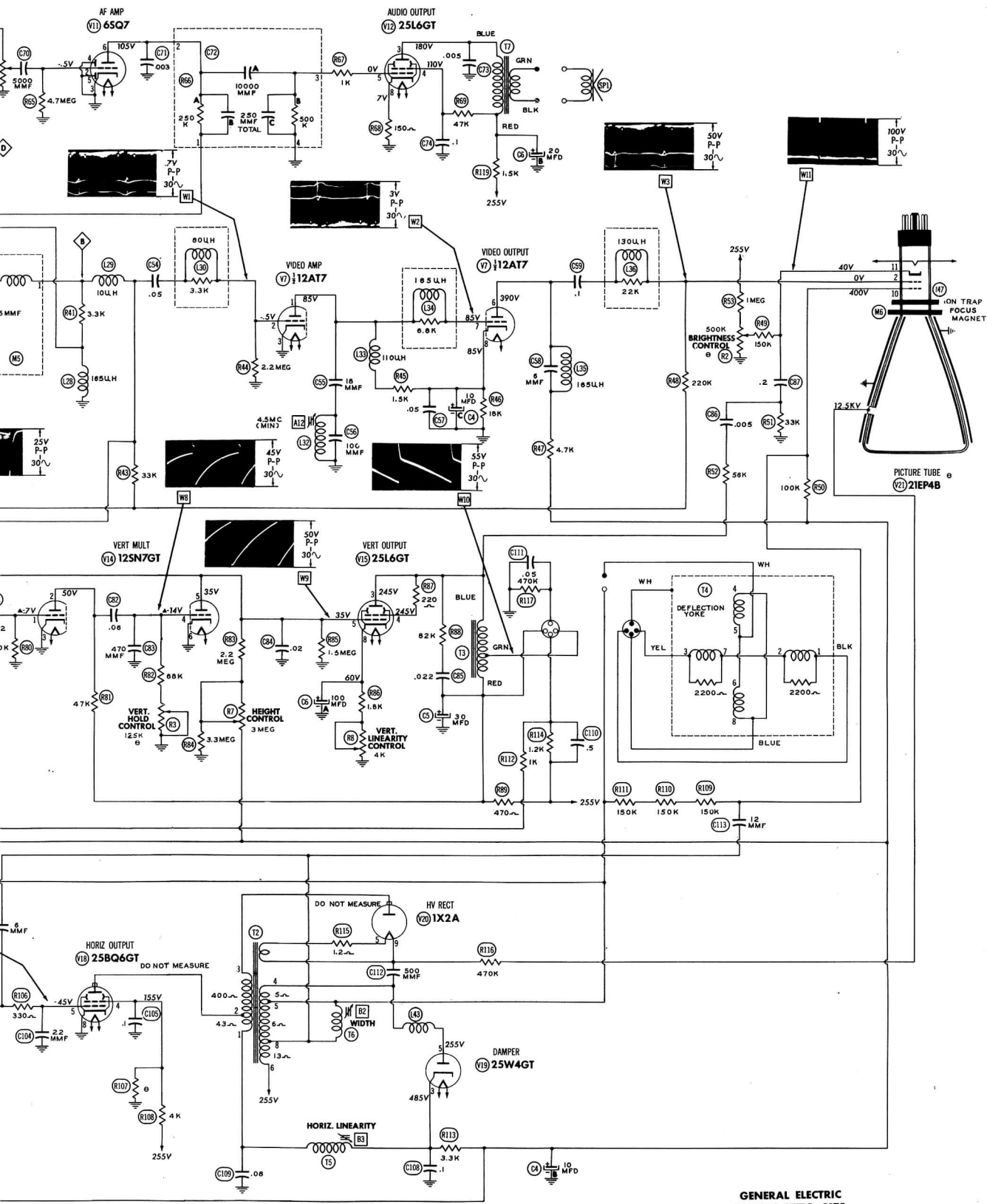


CHANNEL SELECTOR SWITCH SHOWN IN CHANNEL 13 POSITION

A PHOTOFAC STANDARD NOTATION SCHEMATIC
©Howard W. Sams & Co., Inc. 1953

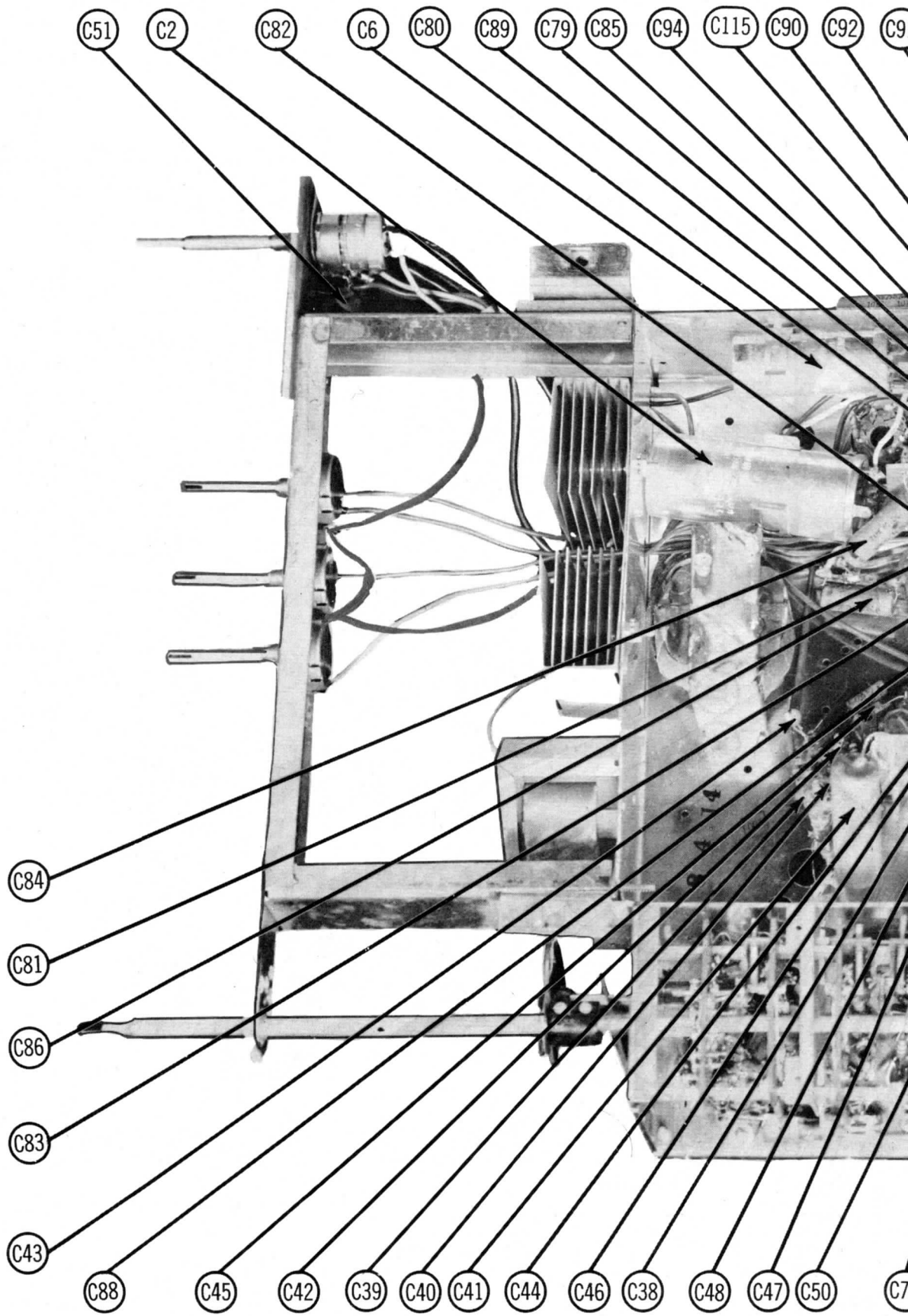




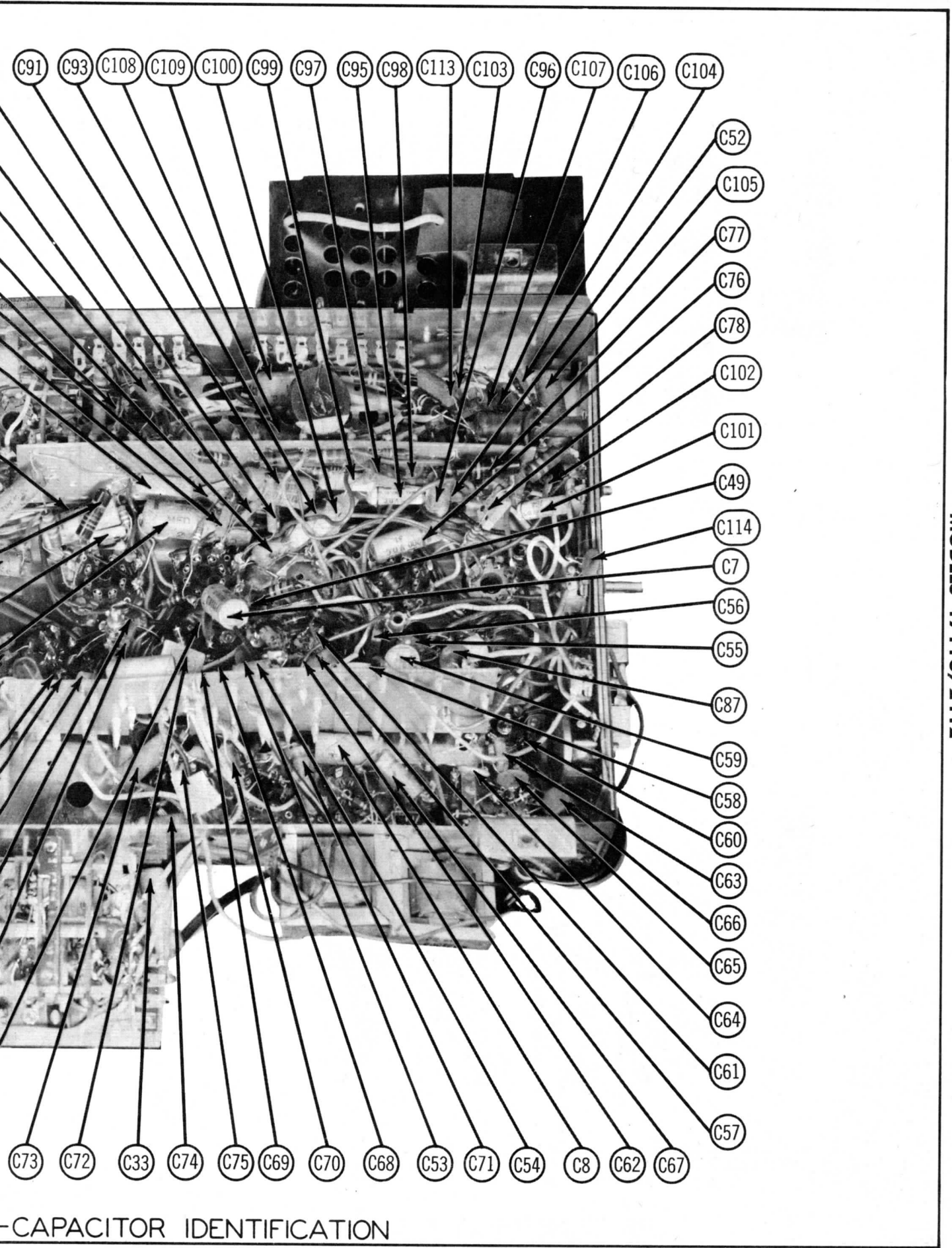


**GENERAL ELECTRIC
MODELS 17T10, 21T2**

**GENERAL ELECTRIC
MODELS 17T10, 21T2**

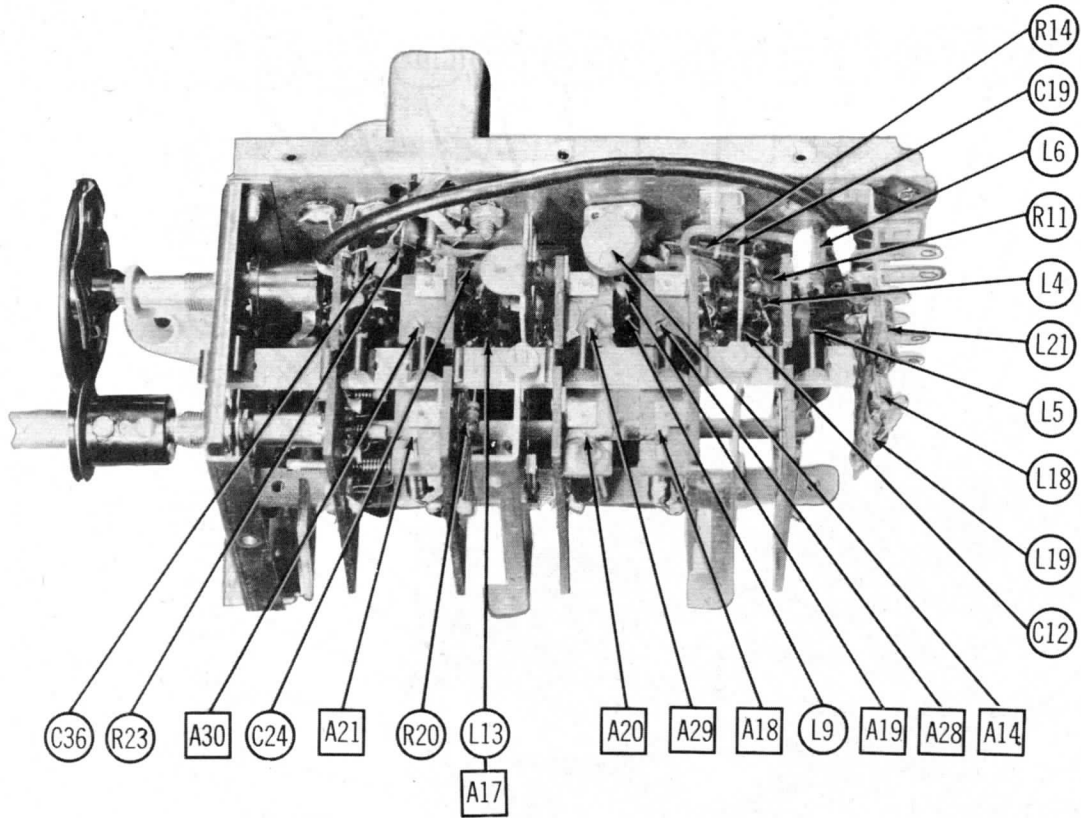


CHASSIS BOTTOM VIEW-C

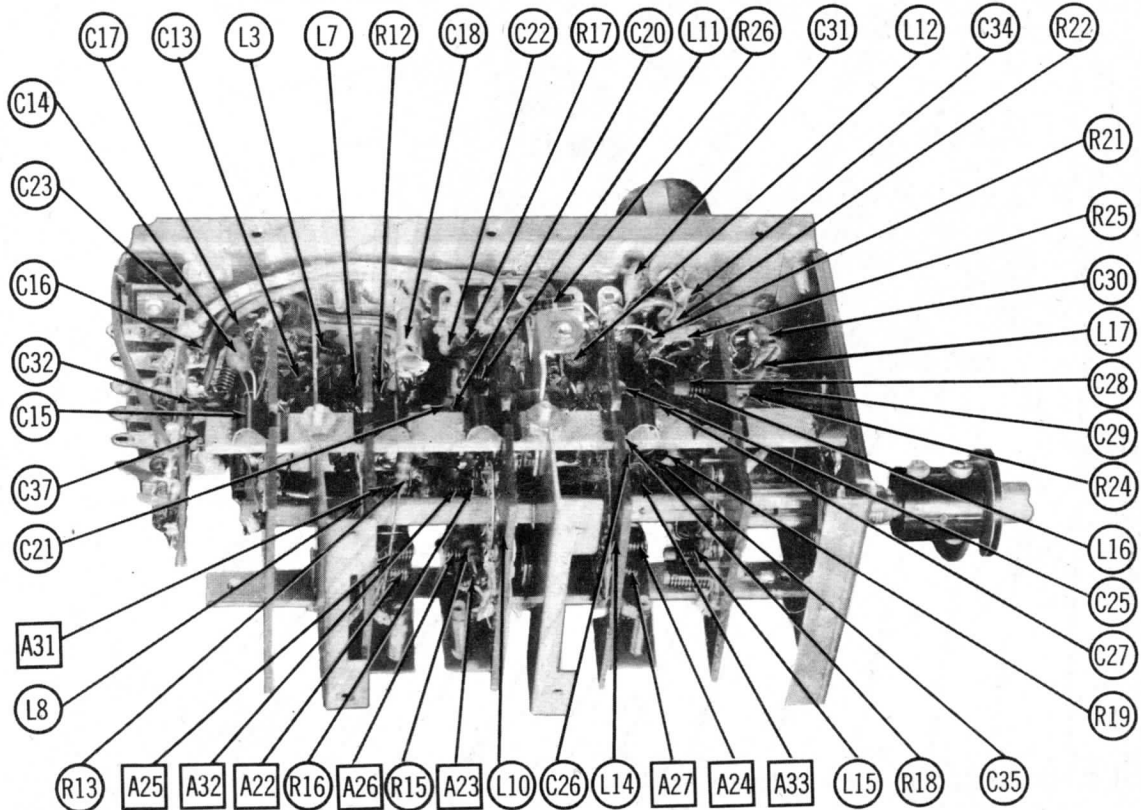


GENERAL ELECTRIC
MODELS 17T10, 21T2

-CAPACITOR IDENTIFICATION



RF TUNER-RIGHT SIDE



RF TUNER-LEFT SIDE

PARTS LIST AND DESCRIPTIONS

TUBES (SYLVANIA or Equivalent)

ITEM No.	USE	REPLACEMENT DATA			RTMA BASE TYPE	NOTES
		General Electric PART No.	STANDARD REPLACEMENT			
V1	1st RF Amplifier	6AB4	6AB4		5CE	
V2	2nd RF Amplifier	6AK5	6AK5		7BD	
V3	Converter	12AT7	12AT7		9A	
V4	1st Video IF Amp.	6CB6	6CB6		7CM	
V5	2nd Video IF Amp.	6CB6	6CB6		7CM	
V6	3rd Video IF Amp.	6CB6	6CB6		7CM	
V7	Video Amplifier					
	Video Output	12AT7	12AT7		9A	
V8	Sound IF Amp.	6AU6	6AU6		7BK	
V9	Limitter	6AU6	6AU6		7BK	
V10	Ratio Detector	6AL5	6AL5		6BT	
V11	AF Amplifier	6SQ7	6SQ7		8Q	
V12	Audio Output	25L6GT	25L6GT		7S	
V13	Sync Amplifier					
	Sync Clipper	6SL7GT	6SL7GT		8BD	
V14	Vert. Oscillator	12SN7GT	12SN7GT		8BD	
V15	Vert. Output	25L6GT	25L6GT		7S	
V16	Horiz. Discr. Noise Suppressor	6AQ7GT	6AQ7GT			
V17	Horiz. AFC					
	Horiz. Oscillator	12SN7GT	12SN7GT		8BD	
V18	Horiz. Output	25BQ6GT	25BQ6GT		6AM	
V19	Damper	25W4GT	25W4GT		4CG	
V20	HV Rectifier	LX2A	LX2A		9Y	

CATHODE-RAY TUBE

ITEM No.	USE	REPLACEMENT DATA			RTMA BASE TYPE	NOTES
		General Electric PART No.	SYLVANIA PART No.			
V21 A	21EP4B		21EP4 ① 21EP4A		12D 12D 12D	① Circuit changes necessary.
B	17BP4A		17BP4 ① 17HP4 ① 17RP4 ①		12D 12C 12C	

CAPACITORS

Capacity values given in the rating column are in mfd. for Electrolytic and Paper Capacitors, and in mmfd. for Mica and Ceramic Capacitors.

ITEM No.	RATING		REPLACEMENT DATA								NOTES
	CAP.	VOLT	General Electric PART No.	AEROVOX PART No.	CENTRALLAB PART No.	CORNELL-DUBILIER PART No.	ERIE PART No.	MALLORY PART No.	SPRAGUE PART No.		
C1	300	150	RCE-110	AFHS1-72		XA005		FP119	TVL-1434		
C2	125	350	RCE-140	AFHS1-73		XA012		FP140	TVL-1638		
C3	150	300	RCE-143	AFHS1-73		XA012		FP217.9	TVL-1584		
C4A	40	300	RCE-118	AFH3-154		C136		FP396.2	TVL-2826		
C4B	10	450									
C4C	10	150									
C5	30	450	RCE-141	PRS450/30		BR3045A		TC77	TVA-1711		
C6A	100	75	RCE-142	AFH2-93		C130		FP255	TVL-1714		
C6B	20	300							TVA-1420		
C7	1	50	RCE-090	PRS150/4		BBR-1-50T		TC31	TVA-1300		
C8	1	50	RCE-090	PRS150/4		BBR-1-50T		TC31	TVA-1300		
C9	150	500	UCU-532	1468-00015	D6-151	5W5T15	GP2K-151	MC236	IFM-315		
C10	150	500	UCU-532	1468-00015	D6-151	5W5T15	GP2K-151	MC236	IFM-315		
C11	1				TCZ-1		NP0K-010		5TCCB-V1		
C12	800		RCW-3037	BPD-0008	DD-801	TM5T8	801-001	DC-521	5HK-D1		
C13	680		RCE-3045	SI680	D6-681		GP2K-681	UC-5368	5GA-T68		
C14	5		RCW-3057	SI5NP0	TCZ-4.7		NP0K-050	ZT-555	5TCCB-V47		
C15	5	500	UCG-1005	1469-000005		5R5V5		MCB205	MS-55		
C16	10		RCW-3066	SI0NP0	TCZ-10		NP0K-100	ZT-541	5TCC-Q1		
C17	10		RCW-3066	SI0NP0	TCZ-10		NP0K-100	ZT-541	5TCC-Q1		
C18	1-5		RCY-065		829-6						
C19A	800			BPD-0008		TM5T8	812-001	DCD-521	5HK-2D1		
C19B	800			BPD-0008		TM5T8					
C20	1-5		RCY-065		829-6						
C21	15		RCW-3076		TCZ-15		NP0K-150		5TCC-Q15		
C22	800		RCW-3037	BPD-0008	DD-801	TM5T8	801-001	DC-521	5HK-D1		
C23	800		RCW-3037	BPD-0008	DD-801	TM5T8	801-001	DC-521	5HK-D1		
C24	680		RCW-3045	SI680	D6-681		GP2K-681	UC-5368	5GA-T68		
C25	.6-2.4		RCY-048		829-3						
C26	680		RCW-3027	SI680	D6-681		GP2K-681	UC-5368	5GA-T68		
C27	3.9		RCN-055				NP0K-3R9				
C28	1.5		RCW-3046				N750K-IR5				
C29	12		RCW-3074		TCZ-12		NP0K-120				
C30	800		RCW-3037	BPD-0008	DD-801	TM5T8	801-001	DC-521	5HK-D1		
C31	800		RCW-3037	BPD-0008	DD-801	TM5T8	801-001	DC-521	5HK-D1		
C32	800		RCW-3037	BPD-0008	DD-801	TM5T8	801-001	DC-521	5HK-D1		
C33	.05	600	RCC-102	P688-05	DF-503	PTE685		PT615	6TM-S5		
C34	800		RCW-3037	BPD-0008	DD-801	TM5T8	801-001	DC-521	5HK-D1		
C35	5	500	UCG-1005	1469-000005		5R5V5		MCB205	MS-55		
C36	800		RCW-3037	BPD-0008	DD-801	TM5T8	801-001	DC-521	5HK-D1		
C37	800		RCW-3037	BPD-0008	DD-801	TM5T8	801-001	DC-521	5HK-D1		
C38	5000		RCW-3014	BPD-005	DD-502	TM5D5	811-005	DC-525	5HK-D5		
C39	51	500	UCG-2021	1469-000005		5R5Q5		MCB225	MS-45		
C40	5000		RCW-3014	BPD-005	DD-502	TM5D5	811-005	DC-525	5HK-D5		
C41	.5	200	RCC-016	P288-5		PJ2P5		PT405	2TM-P5		
C42	800		RCW-3037	BPD-0008	DD-801	TM5T8	801-001	DC-521	5HK-D1		
C43	800		RCW-3037	BPD-0008	DD-801	TM5T8	801-001	DC-521	5HK-D1		
C44	5000		RCW-3014	BPD-005	DD-502	TM5D5	811-005	DC-525	5HK-D5		
C45	5	500	UCG-1005	1468-000005	TCZ-4.7	5W5V5	GPIK-050	MC205	IFM-55		
C46	5000		RCW-3014	BPD-005	DD-502	TM5D5	811-005	DC-525	5HK-D5		
C47	22	500	UCG-1012	1469-000025		5R5Q25		MCB220	MS-425		
C48	10	500	UCG-2004	1468-00001	D6-100	5W5Q1	GPIK-100	MC215	IFM-41		
C49	800		RCW-3037	BPD-0008	DD-801	TM5T8	801-001	DC-521	5HK-D1		

GENERAL ELECTRIC
MODELS 17T10, 21T2

CAPACITORS (CONT.)

ITEM No.	RATING		REPLACEMENT DATA								NOTES
	CAP.	VOLT	General Electric Part No.	AEROVOX Part No.	CENTRALAB Part No.	CORNELL-DUBILIER Part No.	ERIE Part No.	MALLORY Part No.	SPRAGUE Part No.		
C50	5000		RCW-3014	BPD-005	DD-502	TM5D5	811-005	DC-525	5HK-D5		
C51	5000		RCW-3014	BPD-005	DD-502	TM5D5	811-005	DC-525	5HK-D5		
C52	800		RCW-3037	BPD-0008	DD-801	TM5T8	801-001	DC-521	5HK-D1		
C53	5000		RCW-3014	BPD-005	DD-502	TM5D5	811-005	DC-525	5HK-D5		
C54	.05	200	RCC-105	P288-05	DF-503	PJ255		PT415	2TM-85		
C55	.18	500	UCG-2010						MS-42		
C56	.100	500	UCU-1528	1469-0001		5R5T1		MCB235	MS-31		
C57	.05	200	UCO-045	P288-05	DF-503	PJ255		PT415	2TM-85		
C58	.6	500	UCU-002								
C59	.1	600	RCN-031	P688-1	DF-104	PTE6P1		PT601	6TM-P1		
C60	5000		RCW-3014	BPD-005	DD-502	TM5D5	811-005	DC-525	5HK-D5		
C61A	4000		RCN-047	BPD-2X004	D6-402	TM5DD5	812-004	DCD-524	5HK-2D4		
C62	5000				D6-402		812-004				
C63	100	500	RCW-3014	BPD-005	DD-502	TM5D5	811-005	DC-525	5HK-D5		
C64	5000		UCU-028	1468-0001	D6-101	5W5T1	GPIK-101	MC235	1FM-31		
C65	5000		RCW-3014	BPD-005	DD-502	TM5D5	811-005	DC-525	5HK-D5		
C66	5000		RCW-3014	BPD-005	DD-502	TM5D5	811-005	DC-525	5HK-D5		
C67	.001	600	UCU-035	P688-001	D6-102	PTE6D1	GP2L-102	PT621	6TM-D1		
C68	.002	600	UCU-036	P688-002	D6-202	PTE6D2	GP2-333-202	PT622	6TM-D2		
C69	5000		RCW-3014	BPD-005	DD-502	TM5D5	811-005	DC-525	5HK-D5		
C70	5000		RCW-3014	BPD-005	DD-502	TM5D5	811-005	DC-525	5HK-D5		
C71	.003	600	UCU-037	P688-003	D6-302	PTE6D3	GP2-333-302	PT623	6TM-D3		
C72A	10000										
C72B	.250		*REK-002		*PC-81		*1404-02		*102C2		
C73	.005	1000	RCC-059	P1088-005		PTE16D5		PT16D5	MB-D5		
C74	.1	400	UCU-048	P488-1	DF-104	PTE4P1		PT401	4TM-P1		
C75	5000		RCW-3014	BPD-005	DD-502	TM5D5	811-005	DC-525	5HK-D5		
C76	.05	200	UCU-045	P288-05	DF-503	PJ255		PT415	2TM-85		
C77	.01	600	RCN-018	P688-01	D6-103	PTE6S1		PT611	6TM-S1		
C78	.470	500	UCU-1044	1468-0005	D6-471	5W5T5	GP2K-471	MC245	1FM-35		
C79A	.001		*REK-003	P688-001	†PC-176	PTE6D1	GP2L-102	PT621	6TM-D1		
C80	.0022			P688-0022		PTE6D22	GP2-333-222	PT6222	6TM-D22		
C81	.0022	600	RCC-115	P688-0022	D6-222	PTE6D22	GP2-333-222	PT616	6TM-S6		
C82	.06	600	RCN-012	P688-06				PT616	6TM-S6		
C83	.470	500	UCU-1044	1468-0005	D6-471	5W5T5	GP2K-471	MC245	1FM-35		
C84	.02	600	RCC-113	P688-02	DF-203	PTE6S2		PT612	6TM-S2		
C85	.022	1000	RCN-044	P1088-022				PT6122	6TM-S22		
C86	.005	600		P688-005	D6-502	PTE6D5	GP2-333-502	PT625	6TM-D5		
C87	.2	200	UCU-050	484-2				TP429	2TM-P22		
C88	.2	200	UCU-050	484-2				TP429	2TM-P22		
C89	100	500	RCU-299								
C90	130	500	UCU-028	1469-0001	D6-101	5W5T1	GPIK-101	MC235	1FM-31		
C91	.05	600	RCC-102	P688-05	DF-503	PTE6S5		PT615	6TM-S5		
C92	.980	500	RCU-294	1479-0007	D6-681			UC-5388	1FM-37		
C93	.01	600	RCN-025	P688-01	D6-103	PTE6S1	GP2K-333-103	PT611	6TM-S1		
C94	.03	200	UCU-042	P488-03		PTE4S3		PT413	4TM-S3		
C95	.0039	600	RCN-034	1464-004		MDR54D		MCB463	MS-24		
C96	.05	200	RCC-105	P288-05	DF-503	PJ255		PT415	2TM-S5		
C97	.470	500	UCU-1044	1468-0005	D6-471	5W5T5	GP2K-471	MC245	1FM-35		
C98	220	500	UCG-1036	1469-00025		5R5T25		MCB240	MS-325		
C99	.0018	600	RCN-033								
C100	1000	500		1464-001				MCB255	MS-21		
C101	.0018	600	RCN-033								
C102	5000		RCW-3014	BPD-005	DD-502	TM5D5	811-005	DC-525	5HK-D5		
C103	.6	1500	RCU-300								
C104	22	500	UCG-1012	1469-00025				MCB220	MS-425		
C105	.1	400	UCO-048	P488-1	DF-104	PTE4P1		PT401	4TM-P1		
C106	.47	1500	UCG-1020					MCL447	15GAB-Q47		
C107	220	500	UCU-036	1468-00025	D6-221	5W5T25	GP2K-221	MC240	1FM-325		
C108	.1	600	UCU-048	P688-1		PTE6P1		PT601	6TM-P1		
C109	.08	600	RCC-114					PT405	2TM-P5		
C110	.5	200	RCC-016	P288-5	DF-503	PJ2P5		PT615	6TM-S5		
C111	.05	600	UCU-045	P688-05	DF-503	PTE6S5		PT615	6TM-S5		
C112	500	20000	RCN-035	HV20C	TV3-502	MM-C20T5	413-501		20DK-T5		
C113	12	1500	RCU-305								
C114	500		RCW-3014	BPD-005	DD-502	TM5D5	811-005	DC-525	5HK-D5		
C115	12	1500	RCU-305								

ITEM No.	RATING		REPLACEMENT DATA		NOTES
	OHMS	WATT	General Electric Part No.	IRC Part No.	
R9	3.3Meg		URD-133	BTS-3.3Meg	
R10	3.3Meg		URD-133	BTS-3.3Meg	
R11	120Ω		URD-027	BTS-120	
R12	18KΩ		URD-079		
R13	18KΩ		URD-079		
R14	5600Ω	1	URE-067		
R15	680Ω		URD-045	BTS-680	
R16	1200Ω		URD-051	BTS-1200	
R17	10KΩ		URD-073		
R18	12KΩ		URD-075		
R19	1000Ω		URD-049	BTS-1000	
R20	5600Ω		URD-067	BTS-5600	
R21	10KΩ		URD-073		
R22	220KΩ		URD-105	BTS-220K	
R23	1000Ω		URD-049	BTS-1000	
R24	8200Ω		URD-071	BTS-8200	
R25	3300Ω		URD-061	BTS-3300	
R26	2200Ω		URD-057	BTS-2200	
R27	5600Ω		RRW-079		
R28	100KΩ		URD-097	BTS-100K	
R29	22KΩ		URD-081		
R30	100Ω		URD-025	BTS-100	
R31	1000Ω		URD-049	BTS-1000	
R32	27KΩ		URD-083		
R33	220KΩ		URD-105		
R34	100Ω		URD-025	BTS-100	
R35	1000Ω		URD-049	BTS-1000	
R36	3300Ω	10	RRW-098	1/3/4A-3500	
R37	22KΩ		URD-081		
R38	82Ω		URD-023	BTS-82	
R39	1000Ω		URD-049	BTS-1000	
R40	5600Ω		URF-067	BTB-5600	
R41	3300Ω-5%		URD-1061	BTS-3300-5%	
R42	33KΩ		URD-085	BTS-33K	
R43	33KΩ		URD-085	BTS-33K	
R44	2.2Meg		URD-129	BTS-2.2Meg	
R45	1500Ω		URD-053	BTS-1500	
R46	18KΩ	2	URF-079	BTB-18K	
R47	4700Ω	2	URF-066	BTB-4700	
R48	220KΩ		URD-105	BTS-220K	
R49	150KΩ		URD-101	BTS-150K	
R50	100KΩ-5%		URD-1097	BTS-100K-5%	
R51	33KΩ		URD-085	BTS-33K	
R52	56KΩ		URD-091	BTS-56K	
R53	1Meg		URD-121	BTS-1Meg	
R54	220Ω		URD-033	BTS-220	
R55	39KΩ		URD-087		
R56	9100Ω-5%				Note 1
R57	56KΩ		URD-091	BTS-56K	
R58	470KΩ		URD-113	BTS-470K	
R59	1000Ω		URD-049	BTS-1000-5%	
R60	100KΩ-5%		URD-1097	BTS-100K-5%	
R61	270Ω		URD-035	BTS-270	
R62	22KΩ-5%		URD-1081	BTS-22K-5%	
R63	22KΩ-5%		URD-1081	BTS-22K-5%	
R64	22KΩ-5%		URD-1081	BTS-22K-5%	
R65	4.7Meg		URD-137	BTS-4.7Meg	

Note 1. Some models use a 10KΩ resistor in this application.
 Note 2. Some models use a 180KΩ resistor in this application.
 Note 3. Some models use a .6Meg resistor in this application.
 * Special globar resistor-measures 14KΩ at 140 Volts.
 ** Special resistor-measures 20ΩHot, 250Ω Cold.
 † Items R66A, R66B, C72A, C72B, C72C are combined on one unit.
 ‡ Items R79A, R79B, C79A, C79B are combined in one unit.

TRANSFORMER

ITEM No.	RATING				General Electric Part No.	PART No.
	PRI.	SEC. 1	SEC. 2	SEC. 3		
T1	117VAC @ .07A	6.3VAC @ .61A				RTO-002

(1) Drill one new mounting hole.

TRANSFORMER (SW)

ITEM No.	RATING		General Electric Part No.	STANCOB Part No.	MERIT Part No.
	DC RESISTANCE				
	PRI.	SEC.			
T2	443Ωtap @.43Ω	24Ω tap @.13Ω, 19Ω SEC. 2 0Ω	RTO-116	A-8130(1)	HVO-7
T3	170Ω tap @.8Ω		RTO-117	A-8123(2)	A-3037
T4A	30Ω (3)		RLD-045		
T5	15Ω		RLD-016		MWC-1
T6	27Ω				MWC-1

(1) Wire as shown on replacement installation schematic #3.
 (2) Drill one new mounting hole.
 (3) 602 per coil
 (4) Wire as shown on 23111 engineering sheet.

CONTROLS

ITEM No.	RATING		REPLACEMENT DATA					INSTALLATION NOTES
	RESISTANCE	WATTS	General Electric Part No.	IRC Part No.	CLAROSTAT Part No.	CENTRALAB Part No.	MALLORY Part No.	

PARTS LIST AND DESCRIPTIONS (Continued)

RESISTORS

MALLORY PART No.	SPRAGUE PART No.	NOTES
DC-525	5HK-D5	
DC-525	5HK-D5	
DC-521	5HK-D1	
DC-525	5HK-D5	
PT415	2TM-S5	
MCB235	MS-42	
PT415	MS-31	
PT415	2TM-S5	
PT601	6TM-P1	
DC-525	5HK-D5	
HCD-524	5HK-2D4	
DC-525	5HK-D5	
MC235	1FM-31	
DC-525	5HK-D5	
DC-525	5HK-D5	
DC-525	5HK-D5	
PT621	6TM-D1	
PT622	6TM-D2	
DC-525	5HK-D5	
DC-525	5HK-D5	
PT623	6TM-D3	
	*102C2	
PT16D5	MB-D5	
PT401	4TM-P1	
DC-525	5HK-D5	
PT415	2TM-S5	
PT611	6TM-S1	
MC245	1FM-35	
PT621	6TM-D1	
PT6222	6TM-D22	
PT6222	6TM-D22	
PT616	6TM-S6	
MC245	1FM-35	
PT612	6TM-S2	
PT6122	MB-S22	
PT625	6TM-D5	
TP429	2TM-P22	
TP429	2TM-P22	
MC235	1FM-31	
PT615	6TM-S5	
UC-5368	1FM-37	
PT611	6TM-S1	
PT413	4TM-S3	
MCB463	MS-24	
PT415	2TM-S5	
MC245	1FM-35	
MCB240	MS-325	
MCB255	MS-21	
DC-525	5HK-D5	Note 1
MCB220	MS-425	Note 1
PT401	4TM-P1	
MCL447	15GAB-Q47	
MC240	1FM-325	
PT601	6TM-P1	
PT405	2TM-P5	
PT615	6TM-S5	
	20DK-T5	
DC-525	5HK-D5	Note 1

ITEM No.	RATING		REPLACEMENT DATA		NOTES
	OHMS	WATT	General Electric PART No.	IRC PART No.	
R9	3.3Meg		URD-133	BTS-3.3Meg	
R10	3.3Meg		URD-133	BTS-3.3Meg	
R11	120Ω		URD-027	BTS-120	
R12	18KΩ		URD-079		
R13	18KΩ		URD-079		
R14	5600Ω		URE-067		
R15	680Ω		URD-045	BTS-680	
R16	1200Ω		URD-051	BTS-1200	
R17	10KΩ		URD-073		
R18	12KΩ		URD-075		
R19	1000Ω		URD-049	BTS-1000	
R20	5600Ω		URD-067	BTS-5600	
R21	10KΩ		URD-073		
R22	220KΩ		URD-105	BTS-220K	
R23	1000Ω		URD-049	BTS-1000	
R24	8200Ω		URD-071	BTS-8200	
R25	3300Ω		URD-061	BTS-3300	
R26	2200Ω		URD-057	BTS-2200	
R27	5600Ω		RRW-079		
R28	100KΩ		URD-037	BTS-100K	
R29	22KΩ		URD-081		
R30	100Ω		URD-025	BTS-100	
R31	1000Ω		URD-049	BTS-1000	
R32	27KΩ		URD-083		
R33	220KΩ		URD-105	BTS-220K	
R34	100Ω		URD-025	BTS-100	
R35	1000Ω		URD-049	BTS-1000	
R36	3300Ω	10	RRW-098	1 3/4A-3500	
R37	22KΩ		URD-081		
R38	82Ω		URD-023	BTS-82	
R39	1000Ω		URD-049	BTS-1000	
R40	5600Ω		URF-067	BTS-5600	
R41	3300Ω-5%		URD-1061	BTS-3300-5%	
R42	33KΩ		URD-085	BTS-33K	
R43	33KΩ		URD-085	BTS-33K	
R44	2.2Meg		URD-129	BTS-2.2Meg	
R45	1500Ω		URD-053	BTS-1500	
R46	18KΩ	2	URF-079	BTS-18K	
R47	4700Ω	2	URF-065	BTS-4700	
R48	220KΩ		URD-105	BTS-220K	
R49	150KΩ		URD-101	BTS-150K	
R50	100KΩ-5%		URD-1097	BTS-100K-5%	
R51	33KΩ		URD-085	BTS-33K	
R52	56KΩ		URD-091	BTS-56K	
R53	1 Meg		URD-121	BTS-1 Meg	
R54	220Ω		URD-033	BTS-220	
R55	39KΩ		URD-087		
R56	9100Ω-5%				
R57	56KΩ		URD-091	BTS-56K	Note 1
R58	470KΩ		URD-113	BTS-470K	
R59	1000Ω		URD-049	BTS-1000-5%	
R60	100KΩ-5%		URD-1097	BTS-100K-5%	
R61	270Ω		URD-035	BTS-270	
R62	22KΩ-5%		URD-1081	BTS-22K-5%	
R63	22KΩ-5%		URD-1081	BTS-22K-5%	
R64	22KΩ-5%		URD-1081	BTS-22K-5%	
R65	4.7Meg		URD-137	BTS-4.7Meg	

ITEM No.	RATING		REPLACEMENT DATA		NOTES
	OHMS	WATT	General Electric PART No.	IRC PART No.	
R66A	250KΩ				
R66B	500KΩ				
R67	1000Ω		URD-049	BTA-150	
R68	150Ω		URE-029	BTS-47K	
R69	47KΩ		URD-089	BTS-470K	
R70	470KΩ		URD-133	BTS-470K	
R71	1 Meg		URD-121	BTS-1 Meg	
R72	680KΩ		URD-117	BTS-680K	
R73	10KΩ		URD-073	BTS-10K	
R74	220Ω		URD-033	BTS-220	
R75	22KΩ		URE-081	BTA-22K	
R76	18KΩ		URD-079	BTS-18K	
R77	470KΩ		URD-113	BTS-470K	
R78	47KΩ		URD-089	BTS-47K	
R79A	82KΩ			BTS-82K	
R79B	39KΩ			BTS-39K	
R80	100KΩ-5%		URD-1097	BTS-100K-5%	
R81	47KΩ		URE-089	BTA-47K	
R82	68KΩ		URD-093	BTS-68K	
R83	2.2Meg		URD-129	BTS-2.2Meg	
R84	3.3Meg		URD-133	BTS-3.3Meg	
R85	1.5Meg		URD-125	BTS-1.5Meg	
R86	1800Ω		URF-055	BTS-1800	
R87	220Ω		URD-033		
R88	82KΩ		URD-095	BTS-82K	
R89	470Ω		URE-041	BTA-470	
R90	1 Meg		URD-121	BTS-1 Meg	
R91	1 Meg		URD-121	BTS-1 Meg	
R92	180KΩ		URD-103	BTS-180K	
R93	330KΩ			BTS-330K	Note 2
R94	1 Meg		URD-121	BTS-1 Meg	
R95	150KΩ		URD-101	BTS-150K	
R96	33KΩ		URD-085	BTS-33K	
R97	68KΩ		URE-093	BTA-68K	
R98	27KΩ		URD-083	BTS-27K	
R99	150KΩ		URE-101	BTA-150K	
R100	150KΩ		URE-101	BTA-150K	
R101	68KΩ		URD-093	BTS-68K	
R102	10KΩ		URD-073	BTS-10K	
R103	56KΩ	2	URF-091	BTS-56K	
R104	1 Meg		URD-121	BTS-1 Meg	
R105	15KΩ		URD-077	BTS-15K	
R106	330Ω		URD-037		
R107	*		RRW-088		
R108	4000Ω	10	RRW-053	1 3/4A-4000	
R109	150KΩ	1	URE-101	BTA-150K	
R110	150KΩ	1	URE-101	BTA-150K	
R111	150KΩ	1	URE-101	BTA-150K	
R112	1000Ω	1	URE-049	BTA-1000	
R113	3300Ω	2	URF-061	BTS-3300	
R114	1200Ω		URD-051	BTS-1200	
R115	1.2Ω		RRW-058		
R116	470KΩ	1	URE-113		
R117	470KΩ	1	URE-113	BTS-470K	
R118	4.6Ω	5	RRW-048		
R119	1500Ω	5	RRW-082	1 3/4A-1500	
R120	**	**	RRW-051		
R121	470KΩ	1	URE-113	BTA-470K	Note 3

Note 1. Some models use a 10KΩ resistor in this application.
 Note 2. Some models use a 180KΩ resistor in this application.
 Note 3. Some models use a 6.8Meg resistor in this application.
 * Special globar resistor-measures 14KΩ at 140 Volts.
 ** Special resistor-measures 20Ω Hot, 250Ω Cold.
 † Items R66A, R66B, C72A, C72B, C72C are combined on one unit.
 ‡ Items R79A, R79B, C79A, C79B are combined in one unit.

ITEM No.	RATING			
	IMPEDANCE		DC RES.	
	PRI.	SEC.	PRI.	SEC.
T7	2.3KΩ	3.5Ω	184Ω	.46Ω

① Drill one new mounting hole.

ITEM No.	RATINGS		
	SIZE	FIELD	V. C. IMP.
SP1	5"	PM	3.9Ω

ITEM No.	RATINGS	
	TOTAL DIRECT CURRENT	D. C. RESISTANCE
L1	.320A	28Ω

① Drill one new mounting hole.

ITEM No.	USE	DC RES.	
		PRI.	SEC.
L2	Ant. Trans.	200Ω	1.0Ω
L3	RF Choke	0Ω	
L4	Ant. Coil	0Ω	
L5	Ant. Coil	0Ω	
L6	IF Trap	.1Ω	
L7	1st RF Plate Coil	0Ω	
L8	1st RF Plate Coils	0Ω	
L9	RF Coil	0Ω	
L10	2nd RF Grid Coils	0Ω	
L11	2nd RF Grid Coil	0Ω	
L12	Fil. Choke	.31Ω	
L13	2nd RF Plate Coil	0Ω	
L14	2nd RF Plate Coils	0Ω	
L15	Osc. Coils	0Ω	
L16	Osc. Coil	0Ω	
L17	Cathode Choke	.2Ω	
L18	RF Choke	13Ω	
L19	RF Choke	3Ω	
L20	Conv. Plate	.1Ω	1.0Ω
L21	RF Choke	3Ω	
L22	1st Video IF	0Ω	1.0Ω
L23	Fil. Choke	1.8Ω	
L24	2nd Video IF	.1Ω	
L25	Fil. Choke	1.8Ω	
L26	3rd Video IF	.1Ω	
L27	Fil. Choke	1.8Ω	
L28	Shunt Peaking Coil	5.5Ω	
L29	Series Peaking Coil	8.2Ω	
L30	Series Peaking Coil	3.8Ω	
L31	Fil. Choke	1.8Ω	
L32	4.5MC Trap	.4Ω	
L33	Shunt Peaking Coil	4.6Ω	
L34	Series Peaking Coil	6.7Ω	
L35	Shunt Peaking Coil	5.5Ω	
L36	Series Peaking Coil	5Ω	
L37	Sound IF	3Ω	3.2Ω
L38	Ratio Det.	3.5Ω	.8Ω
L39	Fil. Choke	1.8Ω	
L40	RF Choke	1.8Ω	
L41	RF Choke	8.2Ω	
L42	Horiz. Osc.	115Ω	
L43	RF Choke	8.2Ω	

ITEM No.	RATING	
	CURRENT	General Electric PART No.
M1	.320A	RER-008
M2	.320A	RER-008

TRANSFORMER (FILAMENT)

ITEM No.	RATING				REPLACEMENT DATA					
	PRI.	SEC. 1	SEC. 2	SEC. 3	General Electric PART No.	STANCOR PART No.	MERIT PART No.	CHICAGO PART No.	TRIAD PART No.	RCA PART No.
T1	117VAC @ .07A	6.3VAC @ .61A			RTO-002	P-8190 ①	P-2944①	FO-615	F-52X①	

① Drill one new mounting hole.

TRANSFORMER (SWEEP CIRCUITS)

ITEM No.	RATING		REPLACEMENT DATA						NOTES
	DC RESISTANCE		General Electric PART No.	STANCOR PART No.	MERIT PART No.	CHICAGO PART No.	TRIAD PART No.	RCA PART No.	
	PRI.	SEC.							
T2	443Ω tap @ 43Ω	24Ω tap @ 13Ω, 19Ω SEC. 2 0Ω	RTO-116	A-8130①	HVO-7 ①	TFB-5	D-14	231T1 ④	Horiz. Output Trans.
T3	170Ω tap @ 8Ω		RTO-117	A-8123 ②	A-3037	TSO-8 ②	A-102X	222T1 ②	Vert. Output Trans.
T4	30Ω ③		RLD-045						Horiz. Deflection Coils Vert. Deflection Coils
T5	15Ω		RLD-016		MWC-1				Horiz. Lin. Coil
T6	27Ω								Width Coil

① Wire as shown on replacement installation schematic #3.
 ② Drill one new mounting hole.
 ③ 60Ω per coil
 ④ Wire as shown on 231T1 engineering sheet.

INSTALLATION NOTES
Contrast-Panel
Volume-Rear
Attach to R1B
Brightness-Note 1
Attach to R2A
Vert. Hold- Note 2
Attach to R3A
Horiz. Hold-Note 3
Attach to R4A
Horiz. Drive
Attach to R5A
Picture Stabilizer-Note 4
At tach to R6A
Height
Attach to R7A
Vert. Linearity-Wire Wound
Attach to R8A

DESCRIPTIONS (Continued)

ITEM No.	RATING		REPLACEMENT DATA		NOTES
	OHMS	WATT	General Electric PART No.	IRC PART No.	
6A	250KΩ		• REK-002		
7	500KΩ		URE-049	BTA-150	
8	1000Ω		URE-029	BTS-47K	
9	47KΩ		URD-089	BTS-470K	
0	470KΩ		URD-133	BTS-1 Meg	
1	1 Meg		URD-117	BTS-660K	
2	680KΩ		URD-073	BTS-10K	
3	220Ω		URD-033	BTS-220	
4	22KΩ		URE-081	BTA-22K	
5	18KΩ		URD-079	BTS-18K	
6	470KΩ		URD-113	BTS-470K	
7	47KΩ		URD-089	BTS-47K	
8	82KΩ		• REK-003	BTS-82K	
9	39KΩ		URE-089	BTS-39K	
0	100KΩ-5%		URD-1097	BTS-100K-5%	
1	47KΩ		URE-089	BTA-47K	
2	68KΩ		URD-093	BTS-68K	
3	2.2Meg		URD-129	BTS-2.2Meg	
4	3.3Meg		URD-133	BTS-3.3Meg	
5	1.5Meg		URF-055	BTS-1.5Meg	
6	1800Ω		URF-055	BTB-1800	
7	220Ω		URD-033	BTS-220	
8	82KΩ		URD-095	BTS-82K	
9	470Ω		URE-041	BTA-470	
0	1 Meg		URD-121	BTS-1 Meg	
1	1 Meg		URD-121	BTS-1 Meg	
2	180KΩ		URD-103	BTS-180K	
3	330KΩ		URD-121	BTS-330K	
4	1 Meg		URD-101	BTS-1 Meg	
5	150KΩ		URD-085	BTS-150K	
6	33KΩ		URE-085	BTA-33K	
7	68KΩ		URE-093	BTA-68K	
8	27KΩ		URD-083	BTS-27K	
9	150KΩ		URE-101	BTA-150K	
0	150KΩ		URE-101	BTA-150K	
1	68KΩ		URD-093	BTS-68K	
2	10KΩ		URD-073	BTS-10K	
3	56KΩ		URF-091	BTS-56K	
4	1 Meg		URD-121	BTS-1 Meg	
5	15KΩ		URD-077	BTS-15K	
6	330Ω		URD-037	BTS-330	
7			RRW-088		
8	4000Ω	10	RRW-053	1 3/4A-4000	
9	150KΩ	1	URE-101	BTA-150K	
0	150KΩ	1	URE-101	BTA-150K	
1	150KΩ	1	URE-101	BTA-150K	
2	1000Ω	2	URE-049	BTA-1000	
3	3300Ω	1	URF-081	BTB-3300	
4	1200Ω	1	URD-051	BTS-1200	
5	1.2Ω		RRW-058		
6	470KΩ		URE-113	BTS-470K	
7	470KΩ		URD-113	BTS-470K	
8	4.6Ω		RRW-048		
9	1500Ω	5	RRW-082	1 3/4A-1500	
0	**	**	RRW-051		
1	470KΩ	1	URE-113	BTA-470K	Note 3

Note 2

Note 3

(FILAMENT)

REPLACEMENT DATA				
STANCOR PART No.	MERIT PART No.	CHICAGO PART No.	TRIAD PART No.	RCA PART No.
P-8190 ①	P-2944①	FO-615	F-52X①	

DEFLECTION CIRCUITS

DATA				NOTES
CHICAGO PART No.	TRIAD PART No.	RCA PART No.		
TFB-5	D-14	231T1 ④		Horiz. Output Trans.
TSO-8 ②	A-102X	222T1 ②		Vert. Output Trans.
		212R1 ②		Horiz. Deflection Coils Vert. Deflection Coils Horiz. Lin. Coil Width Coil

TRANSFORMER (AUDIO OUTPUT)

ITEM No.	RATING				REPLACEMENT DATA				NOTES	
	IMPEDANCE		DC RES.		General Electric PART No.	STANCOR PART No.	MERIT PART No.	CHICAGO PART No.		TRIAD PART No.
	PRI.	SEC.	PRI.	SEC.						
T7	2.3KΩ	3.5Ω	184Ω	.46Ω	RTO-081	A-3332	A-3025	RO-2 ①	S-IX ①	

① Drill one new mounting hole.

SPEAKER

ITEM No.	RATINGS			REPLACEMENT DATA			NOTES
	SIZE	FIELD	V. C. IMP.	General Electric PART No.	JENSEN PART No.	QUAM PART No.	
SPI	5"	PM	3.9Ω		ST-105 Mod. P5-X	5A07	

FILTER CHOKE

ITEM No.	RATINGS			REPLACEMENT DATA				
	TOTAL DIRECT CURRENT	D. C. RESISTANCE	INDUCTANCE (0 CURRENT 1000 μ)	General Electric PART No.	STANCOR PART No.	MERIT PART No.	CHICAGO PART No.	TRIAD PART No.
LI	.320A	28Ω	.91HY	PLF-051	C-2328 ①		TR-1733 ①	C-23X ①

① Drill one new mounting hole.

COILS (RF-IF)

ITEM No.	USE	DC RES.		REPLACEMENT DATA			NOTES
		PRI.	SEC.	General Electric PART No.	MERIT PART No.	IRC PART No.	
L2	Ant. Trans.	.2ΩCT	.1Ω	RLA-037			
L3	RF Choke	0Ω		RLI-165			
L4	Ant. Coil	0Ω		RSX-023			Includes switch wafer with coils (L4, L5) C13, C14, C15, C16, C17.
L5	Ant. Coil	0Ω					
L6	IF Trap	.1Ω		RLI-159			
L7	1st RF Plate Coil	0Ω					Channel 13.
L8	1st RF Plate Coils	0Ω		RSX-022			Includes switch wafer with coils.
L9	RF Coil	0Ω					
L10	2nd RF Grid Coils	0Ω		RSX-021			Includes switch wafer with coils.
L11	2nd RF Grid Coil	0Ω					Channel 13.
L12	Fil. Choke	.31Ω				CLA	.56 Microhenry.
L13	2nd RF Plate Coil	0Ω					Channel 13.
L14	2nd RF Plate Coils	0Ω		RSX-020 RSX-019			Includes switch wafer with coils. Includes switch wafer with coils. Channel 13.
L15	Osc. Coils	0Ω					
L16	Osc. Coil	0Ω					
L17	Cathode Choke	.2Ω		RLI-145			1.4 Microhenries.
L18	RF Choke	13Ω		RLI-152			
L19	RF Choke	3Ω		RLI-154		CLA	3.3 Microhenries.
L20	Conv. Plate	.1Ω	.1Ω	RTL-139			Includes trap.
L21	RF Choke	3Ω		RLI-154		CLA	2.2 Microhenries.
L22	1st Video IF	0Ω	.1Ω	RTL-137			
L23	Fil. Choke	1.8Ω		RLI-122		CLA	2.2 Microhenries.
L24	2nd Video IF	.1Ω		RLI-096			
L25	Fil. Choke	1.8Ω		RLI-122		CLA	2.2 Microhenries.
L26	3rd Video IF	.1Ω		RLI-173			
L27	Fil. Choke	1.8Ω		RLI-122		CLA	2.2 Microhenries.
L28	Shunt Peaking Coil	5.5Ω		RLI-162	TV-184		165 Microhenries.
L29	Series Peaking Coil	8.2Ω		RLI-138	TV-180	CL-1	10 Microhenries; 80 Microhenries; wound on 3.3KΩ resistor.
L30	Series Peaking Coil	3.8Ω		RLI-174	TV-181*		
L31	Fil. Choke	1.8Ω		RLI-122		CLA	2.2 Microhenries.
L32	4.5MC Trap	.4Ω		RLI-100	TV-151		
L33	Shunt Peaking Coil	4.6Ω		RLI-108	TV-181		110 Microhenries 165 Microhenries; wound on 6.8KΩ resistor.
L34	Series Peaking Coil	6.7Ω		RLI-161	TV-184†		
L35	Shunt Peaking Coil	5.5Ω		RLI-162	TV-184		165 Microhenries. 130 Microhenries; wound on 22KΩ resistor.
L36	Series Peaking Coil	5Ω			TV-182		
L37	Sound IF	3Ω	3.2Ω	RLI-097	TV-108		
L38	Ratio Det.	3.5Ω	.8ΩCT	RTD-008	TV-110		Tertiary winding - 0Ω
L39	Fil. Choke	1.8Ω		RLI-122		CLA	2.2 Microhenries.
L40	RF Choke	1.8Ω		RLI-122		CLA	2.2 Microhenries.
L41	RF Choke	8.2Ω		RLI-138		CL-1	10 Microhenries.
L42	Horiz. Osc.	115Ω		RLC-091			Tapped @ 65Ω
L43	RF Choke	8.2Ω		RLI-138		CL-1	10 Microhenries.

SELENIUM RECTIFIER

ITEM No.	RATING	REPLACEMENT DATA					
		General Electric PART No.	SYLVANIA PART No.	SELETRON PART No.	FEDERAL PART No.	MALLORY PART No.	SARKES TARZIAN PART No.
M1	.320A	RER-008	NJ5	6S2	1023	6S350	350
M2	.320A	RER-008	NJ5	6S2	1023	6S350	350

GENERAL ELECTRIC MODELS 17T10, 21T2

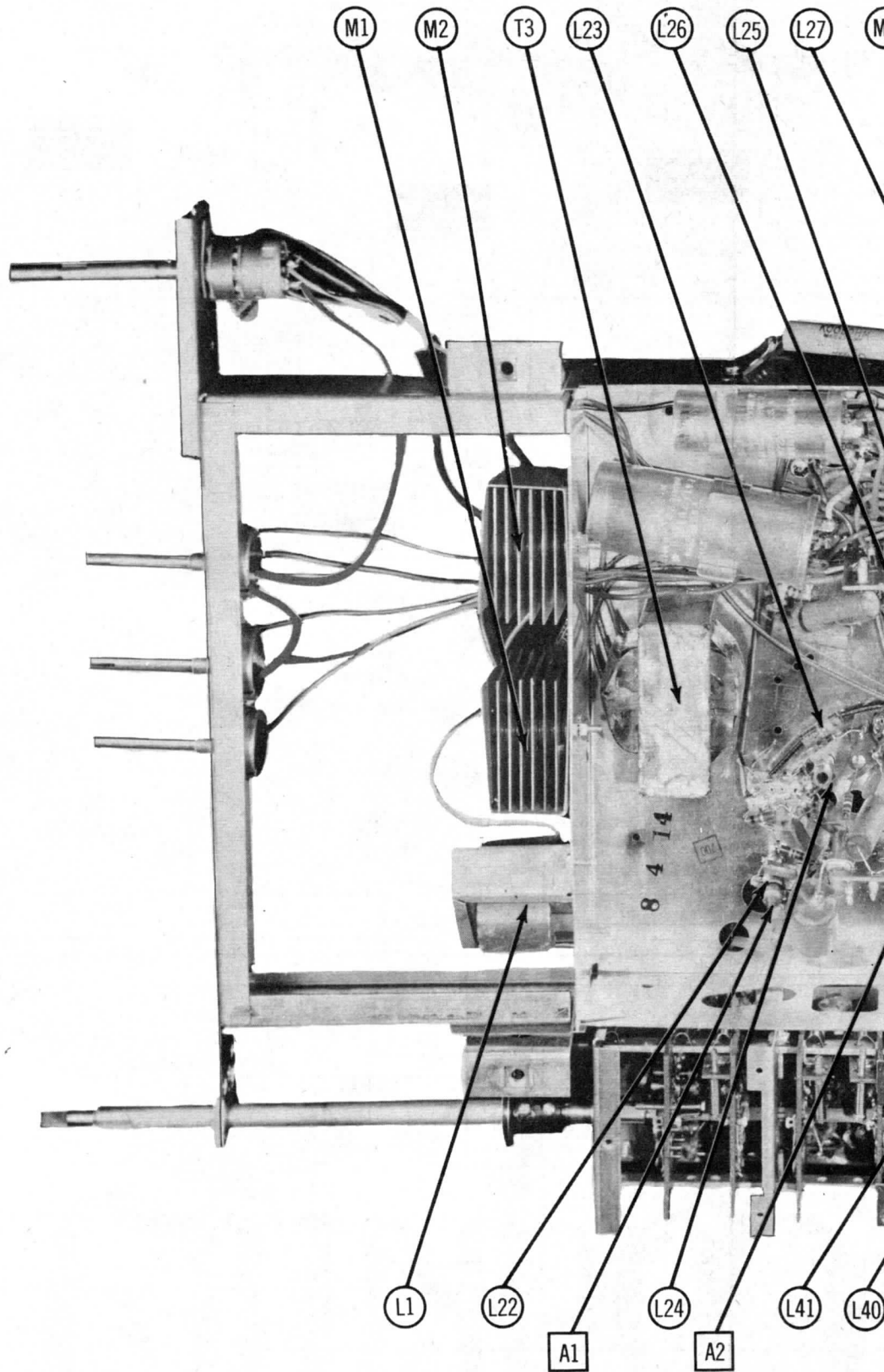
PARTS LIST AND DESCRIPTIONS (Continued)

FUSES

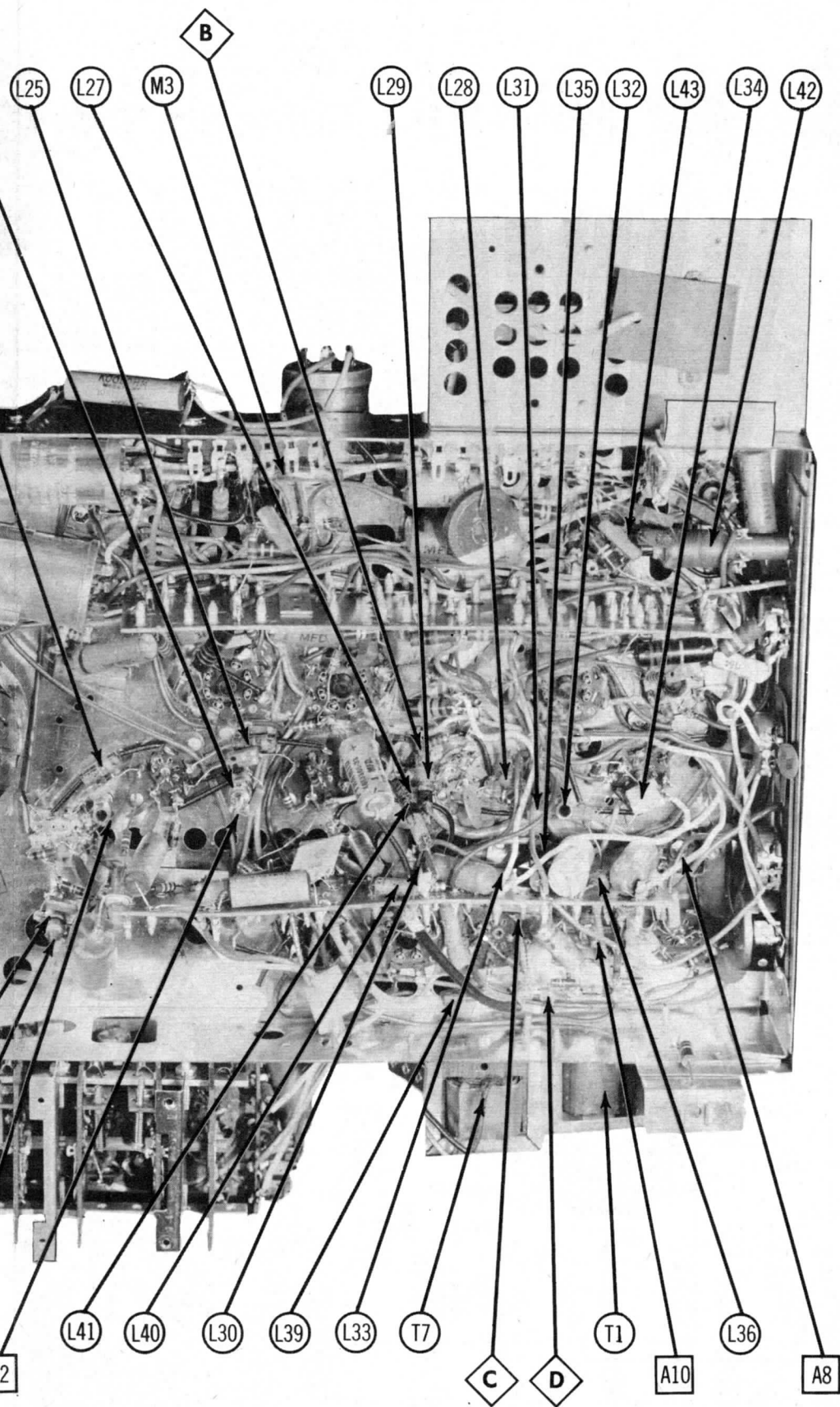
ITEM No.	TYPE	RATING	REPLACEMENT DATA					
			General Electric PART No.		LITTELFUSE PART No.		BUSS PART No.	
			FUSE	HOLDER	FUSE	HOLDER	FUSE	HOLDER
M3	3AG Slo-Blo P/T	1-1/4A 125V	REF-005		3151.25 (3AG-1 1/4A Slo-Blo-P/T)		MDV-1-1/4	

MISCELLANEOUS

ITEM No.	PART NAME	General Electric PART No.	NOTES
M4	RF Tuner	RJX-050	Complete.
M5	Video Detector Assy.	RLX-035	Includes: 3 Coils, 2 Capacitors and Crystal Diode.
M6	Focus Assembly	RLF-054	Includes Centering Device; (Less Flexible Shaft).
M7	Ion Trap	RET-013	
M8	Correction Magnet	REA-002	
	Cabinet	RAV-205	Model 17T10.
	Cabinet	RAV-204	Model 21T2.
	Back	RAB-197	Model 17T10.
	Back	RAB-196	Model 21T2.
	Escutcheon	RDE-125	Model 21T2.
	Door, Escutcheon	RAD-084	Model 21T2.
	Mask	RDM-084	Model 17T10.
	Mask	RDM-032	Model 21T2.
	Safety Glass	RDW-062	Model 17T10.
	Safety Glass	RDW-061	Model 21T2.
	Knob	RDK-263	Off/ On/ Volume,
	Knob	RDK-275	Tine Tuning.
	Knob	RDK-276	Contrast.
	Knob	RDK-299	Channel Selector.
	Knob	RDK-244	Horizontal Hold, Vertical Hold, Brightness Model 21T2
	Knob	RDK-291	Picture Stabilizer



CHASSIS BOTTOM VIEW-INDUCTOR AND



CTOR AND ALIGNMENT IDENTIFICATION